



New

CHISON Q5

4D Portable Color Doppler Ultrasound

FDA CE 0197

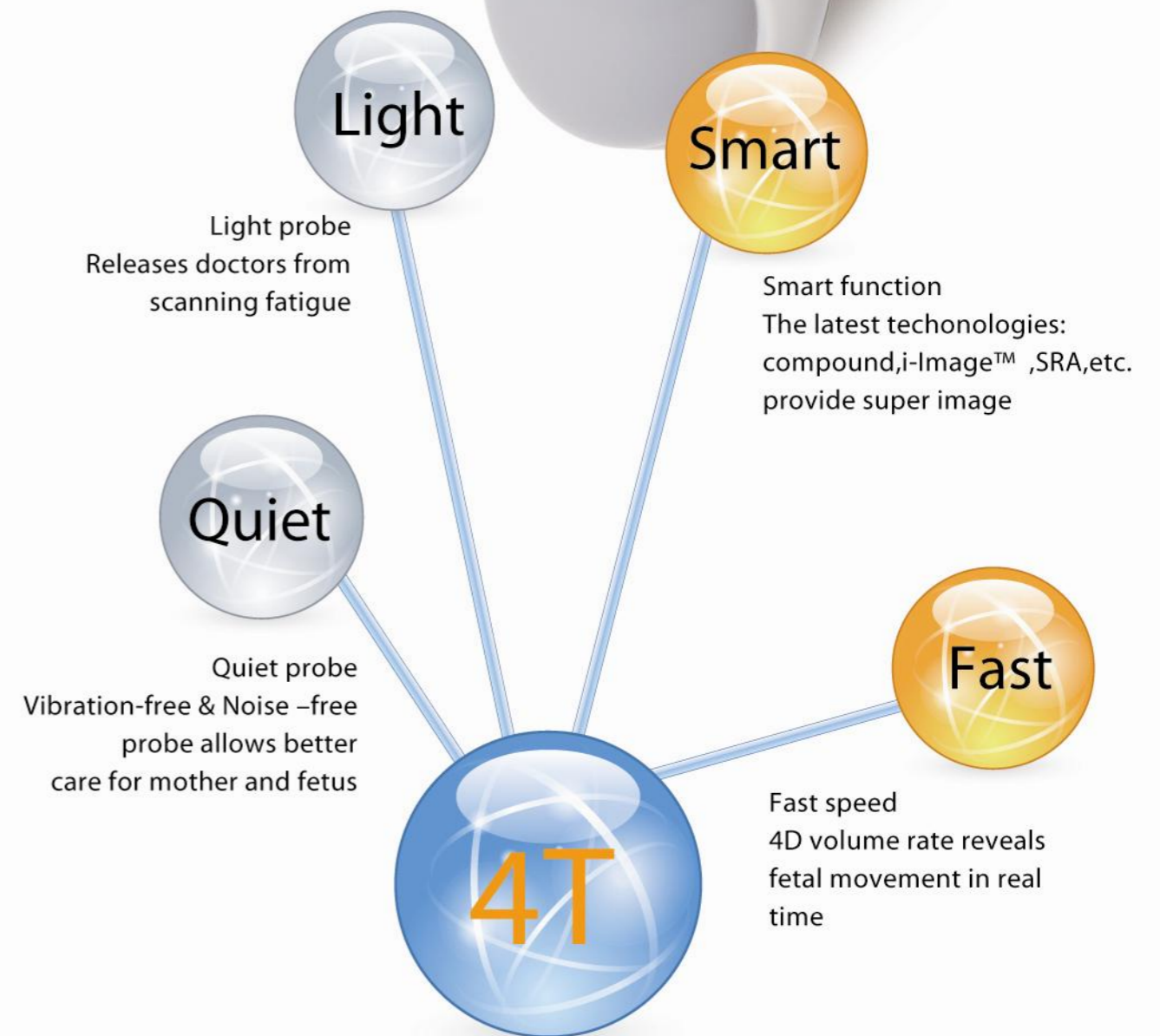
CHISON
Value Beyond Imaging



CHISON Q5 delivers superb image quality for multi-applications in abdomen, OB/GYN, small parts, urology and MSK. With the advanced technologies of SRA, THI, it provides better contrast resolution, which greatly helps the diagnosis of difficult-scan patients.

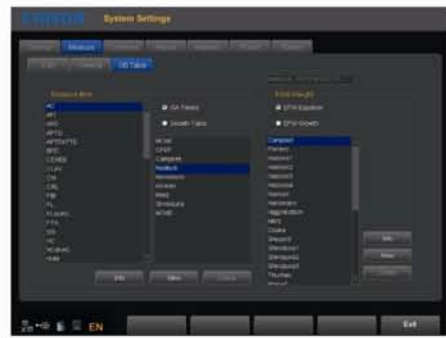
The work-flow oriented User Interface is built to allow user-friendly operation with minimum soft key entries. Ergonomical design of keyboard, 15inch LCD large display, double probe connectors, USB and COM connectivity make your scan FAST and EASY, and allow to focus more on your patients.

"4T"-Unique & Dedicated design



Streamlined Workflow

The multi-purpose user presets, comprehensive measurement & report system, built-in EasyView image archive system, quick image storage/retrieve/transfer, one-button direct print, 4D direct burning to CD makes the complete workflow better than what you can dream of.



Various Measurements



Detailed Reports

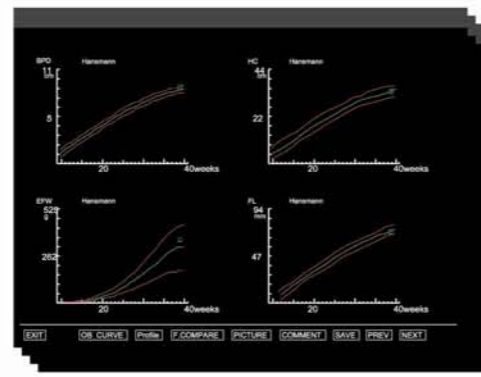


EasyView™ image archive system

Built-in report system

Multiple fetation report and intuitive fetal growth curve graphs are included in OB report package

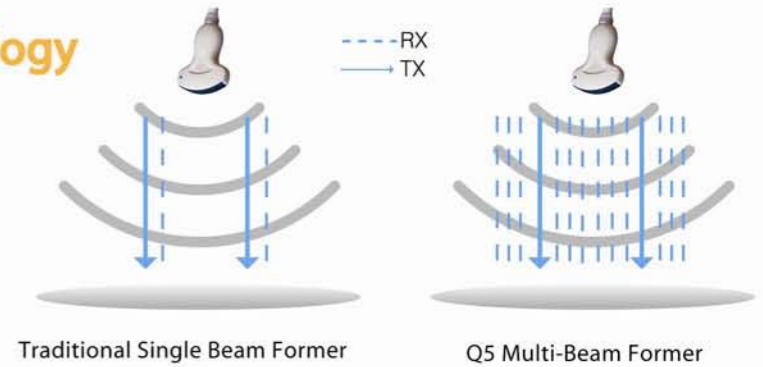
| Measurement Worksheet | | | | | | | | | |
|-----------------------|-------------|--------------------|------------------|-------------|-----------------|-----------|--|--|--|
| ID | NAME | SEX | DOB | AGE | HEART RATE | | | | |
| ID: 123 | NAME: Jany | SEX: F | DOB: JAN-03-1984 | AGE: 25 | HEART RATE: 110 | | | | |
| OB | | | | | | | | | |
| FETAL BIOMETRY | VALUE 1 | VALUE 2 | VALUE 3 | MEAN | UA | REF | | | |
| BPD | 37.98 | | | 37.98 | 17w0d | Head lock | | | |
| AC | 129.66 | | | 129.66 | 17w0d | Head lock | | | |
| FL | 114.40 | | | 114.40 | 17w1d | Head lock | | | |
| FL | 23.71 | | | 23.71 | 17w0d | Head lock | | | |
| LMP | JUN-12-2009 | 2nd | AJA | 17w1d | Muchaf Trans | 0.00mm | | | |
| ED | MAR-20-2010 | | ED/AJA | JUN-01-2010 | Lateral Ventr | 0.00mm | | | |
| EFW | 163.2kg | | | | Headlock | SPOHCACFL | | | |
| GROWTH PERCENTILES | REF | GROWTH PERCENTILES | REF | | | | | | |
| HC | Over Lines | Head lock | Head lock | FL BPD | Over Lines | Head lock | | | |
| AC | Over Lines | Head lock | Head lock | FL AC | Over Lines | Head lock | | | |



Advanced technologies

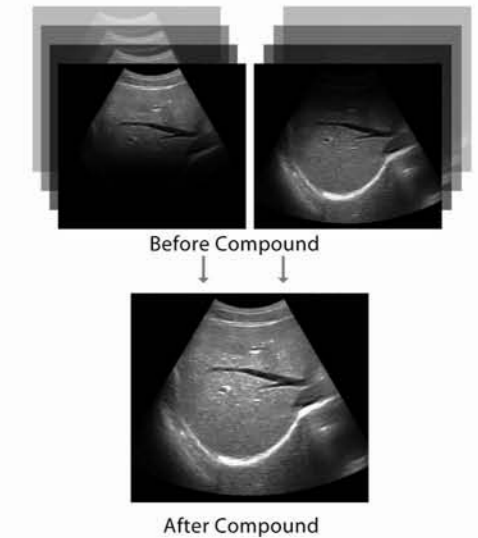
Multi-Beam Former Technology

- Enhance Frame rate
- Improve image resolution



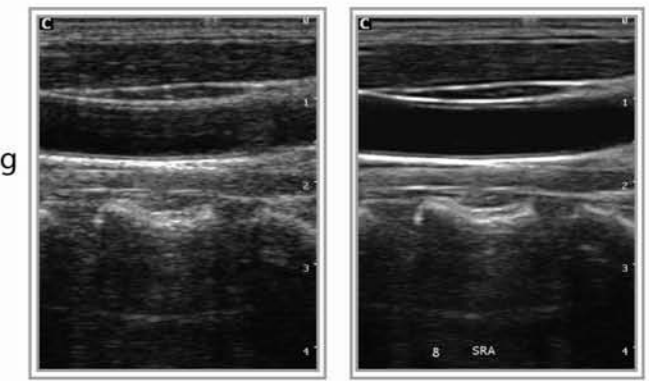
Compounding Technology

The traditional Compound imaging technologies improve the image quality, but lose the frame rate, which affect diagnosis convenience and efficiency. Our Compound imaging has integrated multiple key factors like frequency, focus and time, but will not sacrifice the frame rate.



Speckle Reduction Algorithm (SRA)

SRA is the technique that uses a variety of denoising algorithm to suppress speckle, smooth the tissue images, and make the faint edge more appearing.



Normal

SRA

Premium Images

CHISON Q5
4D Portable Color Doppler Ultrasound

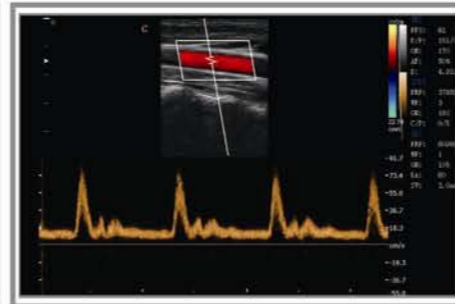
Compact In Size
Powerful Inside



Fetal Face, 26 Weeks



Fetal Face, 31 Weeks



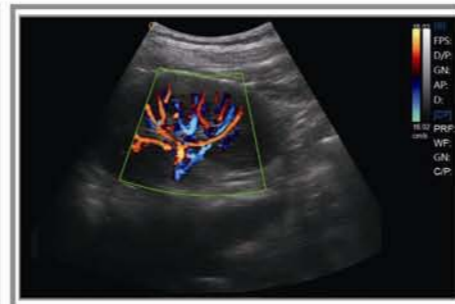
Carotid Artery, PW Mode



Early Pregnancy, B Mode



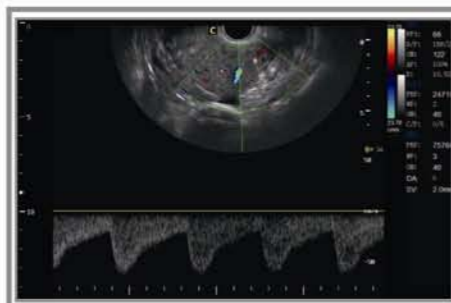
Umbilical Cord, CFM Mode



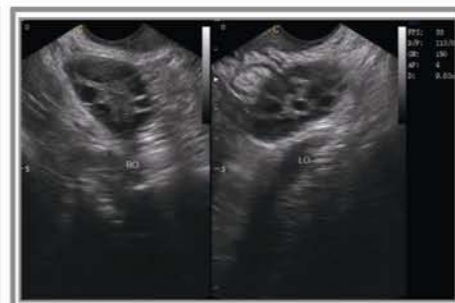
Kidney, CFM Mode



Fetal Spine, B Mode



Hysteromyoma, PW Mode



Polycystic Ovary Syndrome, 2B Mode



Fetal Profile, B Mode



Lymphoma, B Mode



Uterus, CFM Mode



Two Probe Connectors



USB, DICOM



15" LCD



Specifications

Imaging Modes

- B, 2B, 4B, B/M, M
- CFM
- PW Mode
- Power Doppler / Directional PD
- Trapezoidal
- Real-time 4D (Option)
- Chroma B/PW

Probes

- 3.5MHz Convex probe
- 7.5MHz Linear probe
- 7.5MHz Linear probe(60mm)
- 6.0MHz Transvaginal probe
- 7.0MHz Transvaginal probe(180°)
- 6.0MHz Micro-Convex probe
- 3.0MHz Micro-Convex probe (adult Cardiac)
- 3.0MHz Phased Array probe
- 5.0MHz Pediatric probe
- 4.0MHz 4D Volume probe
- Wideband, Multi-frequency

Image Processing Technology

- THI on all probes
- Speckle Reduction Algorithm (SRA)
- Compound technology
- i-Image™: image optimization software

Measurement & Report Packages

- OB&GYN
- Vascular
- Urology
- Small parts
- Basic cardiac

Professional Clinical Applications

- Abdominal
- Obstetrics
- Gynecology
- Vascular and Small parts
- Pediatric
- Urology
- Musculoskeletal

Standard Configuration

Main unit, 15" LCD, 2 probe connectors, Hard disk, 2 USB ports, Video out, TV out, LAN port, VGA out

Options

- 3.5MHz Convex probe
- 7.5MHz Linear probe
- 7.5MHz Linear probe(60mm)
- 6.0MHz Transvaginal probe
- 7.0MHz Transvaginal probe(180°)
- 6.0MHz Micro-Convex probe
- 3.0MHz Micro-Convex probe (adult Cardiac)
- 3.0MHz Phased Array probe
- 5.0MHz Pediatric probe
- 4D package: including 4.0MHz 4D volume probe, 4D software and 4D hardware module
- Video Printer: SONY UP897MD
- PC Printer (any PC printer)
- DICOM 3.0
- i-Image™: image optimization software
- Biopsy kit: for convex, linear, TV probe
- Foot-switch



3.5MHz Convex
D3C60L



7.5MHz Linear
D7L40L



7.5MHz Linear
D7L60L-60mm



5.0MHz Pediatric
D5C20L



3.0MHz Micro-Convex
D3C20L



6.0MHz Micro-convex
D6C15L-Pediatric



6.0MHz Transvaginal
D6C12L



7.5MHz Transvaginal
D7C10L(180°)



3.0MHz Phased array
D3P64L-Adult



4.5MHz 4D Volume
V4C40L

CHISON MEDICAL IMAGING CO., LTD.

Factory Address:

NO.8, Xiang Nan Road, Shuo Fang, New District, Wuxi, Jiang Su Province, CHINA 214142

Sales & Service Contact Address:

No. 9 Xin Hui Huan Road, New District, Wuxi, Jiang Su Province, CHINA 214028

TEL: 0086-510-85310593 / 85310937

FAX: 0086-510-85310726

EMAIL: export@chison.com.cn

www.chison.com

We reserve the right to make changes to this catalogue without prior notice
Please contact our local dealer for the latest information.